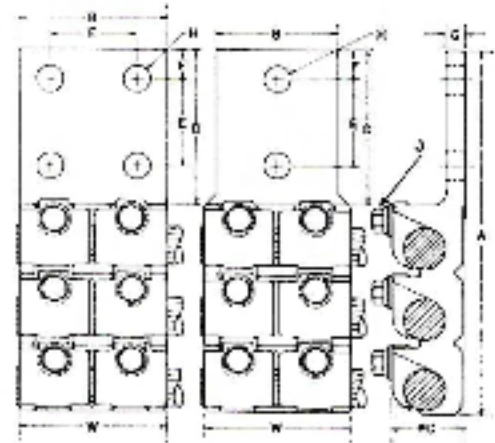
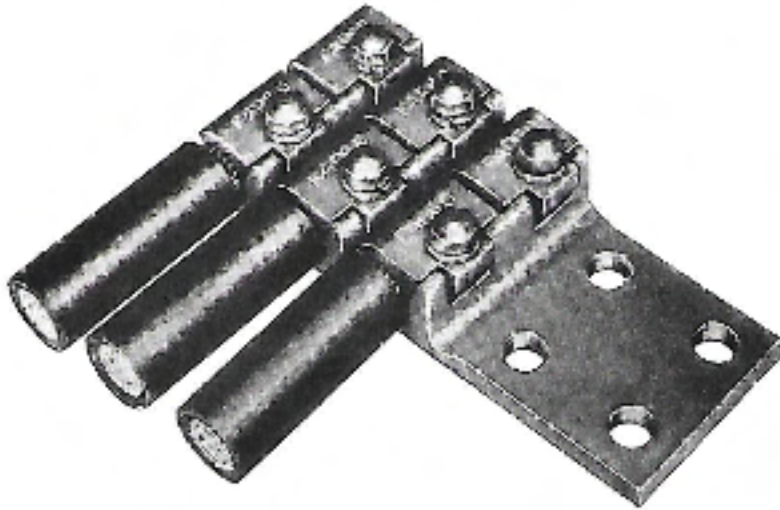


TYPE 3JJAR

Terminal Lug – three cables, 90°



Cat. No.	Cable Range		Holes in Tongue	Dimensions in Inches									
	Min.	Max.		A	B	C	D	E	F	G	H	J	W
3JJ2AR2	#4 Str.	#1 Str.	2	4 $\frac{1}{16}$	1 $\frac{1}{8}$	1 $\frac{1}{16}$	2	1	$\frac{1}{16}$	$\frac{1}{32}$	$\frac{1}{16}$	$\frac{1}{16}$	1 $\frac{3}{4}$
3JJ2AR2N	#4 Str.	#1 Str.	2	5 $\frac{1}{16}$	1 $\frac{1}{8}$	1 $\frac{1}{16}$	3	1 $\frac{3}{8}$	$\frac{5}{16}$	$\frac{1}{32}$	$\frac{1}{16}$	$\frac{1}{16}$	1 $\frac{3}{4}$
3JJ3AR2	1/0 Str.	2/0 Str.	2	5 $\frac{1}{16}$	1 $\frac{1}{8}$	1 $\frac{1}{16}$	2	1	$\frac{1}{16}$	$\frac{1}{32}$	$\frac{1}{16}$	$\frac{1}{16}$	2 $\frac{1}{8}$
3JJ3AR2N	1/0 Str.	2/0 Str.	2	6 $\frac{1}{16}$	1 $\frac{1}{8}$	1 $\frac{1}{16}$	3 $\frac{1}{8}$	1 $\frac{3}{4}$	$\frac{5}{16}$	$\frac{1}{4}$	$\frac{1}{16}$	$\frac{1}{16}$	2 $\frac{1}{8}$
3JJ4AR2N	2/0 Str.	4/0 Str.	2	6 $\frac{3}{16}$	1 $\frac{3}{8}$	1	3 $\frac{1}{4}$	1 $\frac{3}{4}$	$\frac{5}{16}$	$\frac{1}{4}$	$\frac{1}{16}$	$\frac{1}{16}$	2 $\frac{3}{16}$
3JJ4AR4N	2/0 Str.	4/0 Str.	4	6 $\frac{3}{16}$	3	1	3 $\frac{1}{4}$	1 $\frac{3}{4}$	$\frac{5}{16}$	$\frac{1}{4}$	$\frac{1}{16}$	$\frac{1}{16}$	2 $\frac{3}{16}$
3JJ5AR2N	4/0 Str.	350MCM	2	7 $\frac{1}{4}$	2 $\frac{3}{8}$	1 $\frac{1}{4}$	3 $\frac{3}{16}$	1 $\frac{3}{4}$	$\frac{5}{16}$	$\frac{1}{4}$	$\frac{1}{16}$	$\frac{1}{16}$	2 $\frac{3}{4}$
3JJ5AR4N	4/0 Str.	350MCM	4	7 $\frac{1}{4}$	3	1 $\frac{1}{4}$	3 $\frac{3}{16}$	1 $\frac{3}{4}$	$\frac{5}{16}$	$\frac{1}{4}$	$\frac{1}{16}$	$\frac{1}{16}$	2 $\frac{3}{4}$
3JJ6AR2N	350MCM	500MCM	2	7 $\frac{3}{8}$	2 $\frac{1}{2}$	1 $\frac{1}{8}$	3 $\frac{3}{8}$	1 $\frac{3}{4}$	$\frac{5}{16}$	$\frac{3}{16}$	$\frac{1}{16}$	$\frac{1}{16}$	3 $\frac{1}{4}$
3JJ6AR4N	350MCM	500MCM	4	7 $\frac{3}{8}$	3	1 $\frac{1}{8}$	3 $\frac{3}{8}$	1 $\frac{3}{4}$	$\frac{5}{16}$	$\frac{3}{16}$	$\frac{1}{16}$	$\frac{1}{16}$	3 $\frac{1}{4}$
3JJ7AR2N	500MCM	750MCM	2	8 $\frac{1}{2}$	3	1 $\frac{3}{4}$	3 $\frac{3}{8}$	1 $\frac{3}{4}$	$\frac{5}{16}$	$\frac{1}{4}$	$\frac{1}{16}$	$\frac{1}{16}$	3 $\frac{3}{4}$
3JJ7AR4N	500MCM	750MCM	4	8 $\frac{1}{2}$	3	1 $\frac{3}{4}$	3 $\frac{3}{8}$	1 $\frac{3}{4}$	$\frac{5}{16}$	$\frac{1}{4}$	$\frac{1}{16}$	$\frac{1}{16}$	3 $\frac{3}{4}$
3JJ8AR2N	750MCM	1000MCM	2	9 $\frac{3}{8}$	3 $\frac{3}{8}$	1 $\frac{1}{8}$	3 $\frac{3}{8}$	1 $\frac{3}{4}$	$\frac{5}{16}$	$\frac{1}{2}$	$\frac{1}{16}$	$\frac{1}{2}$	4 $\frac{1}{16}$
3JJ8AR1N	750MCM	1000MCM	4	9 $\frac{3}{8}$	3 $\frac{3}{8}$	1 $\frac{1}{8}$	3 $\frac{3}{8}$	1 $\frac{3}{4}$	$\frac{5}{16}$	$\frac{1}{2}$	$\frac{1}{16}$	$\frac{1}{2}$	4 $\frac{1}{16}$

- Tabulated Dimensions are in inches and are approximate only.
- Sizes not shown available on request.
- Blank tongue available on request.
- "N" in catalog number denotes NEMA standard drilling.