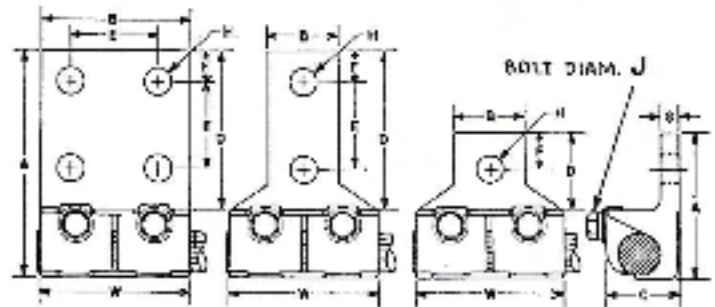
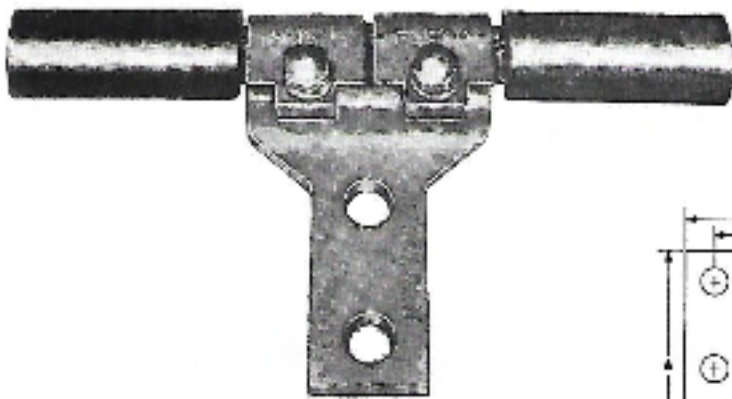


TYPE JJAR

Terminal Lug – one cable, 90°



Cat. No.	Cable Range		Holes in Tongue	Dimensions in Inches									
	Min.	Max.		A	B	C	D	E	F	G	H	J	W
JJ2AR	#4 Str.	#1 Str.	1	1 3/4	3/4	1 1/16	1 1/16	—	3/8	3/16	1/32	5/16	1 3/4
JJ2AR2	#4 Str.	#1 Str.	2	2 1/16	3/4	1 1/16	2	1	3/16	3/16	1/32	5/16	1 3/4
JJ3AR	1/0 Str.	2/0 Str.	1	2 1/16	1 1/16	1 1/16	1	—	3/16	3/32	1/32	5/16	2 1/8
JJ3AR2	1/0 Str.	2/0 Str.	2	3 1/16	1 1/16	1 1/16	2	1	3/16	3/32	1/32	5/16	2 1/8
JJ3AR2N	1/0 Str.	2/0 Str.	2	4 1/16	1 1/16	1 1/16	3 1/8	1 3/4	5/8	3/32	1/16	5/16	2 1/8
JJ4AR	2/0 Str.	4/0 Str.	1	2 3/16	1 1/16	1	1 1/8	—	3/16	1/4	3/16	5/16	2 3/16
JJ4AR2	2/0 Str.	4/0 Str.	2	4 1/16	1 1/16	1	3 1/4	1 3/4	5/8	1/4	3/16	5/16	2 3/16
JJ4AR2N	2/0 Str.	4/0 Str.	2	4 3/16	3	1	3 1/4	1 3/4	5/8	1/4	3/16	5/16	2 3/16
JJ5AR	4/0 Str.	350MCM	1	2 1/2	1 1/4	1 1/4	1 3/8	—	3/8	3/16	3/16	3/8	2 3/4
JJ5AR2N	4/0 Str.	350MCM	2	4 3/8	1 1/4	1 1/4	3 5/16	1 3/4	5/8	3/16	3/16	3/8	2 3/4
JJ5AR4N	4/0 Str.	350MCM	4	4 5/8	3	1 1/4	3 5/16	1 3/4	5/8	3/16	3/16	3/8	2 3/4
JJ6AR	350MCM	500MCM	1	3 1/8	1 1/16	1 1/16	1 3/8	—	3/4	3/16	3/16	3/8	3 1/4
JJ6AR2N	350MCM	500MCM	2	4 7/8	1 1/16	1 1/16	3 3/8	1 3/4	5/8	3/16	3/16	3/8	3 1/4
JJ6AR4N	350MCM	500MCM	4	4 7/8	3	1 1/16	3 3/8	1 3/4	5/8	3/16	3/16	3/8	3 1/4
JJ7AR	500MCM	750MCM	1	3 3/8	1 1/16	1 3/4	1 13/16	—	3/4	3/8	3/16	3/16	3 3/8
JJ7AR2N	500MCM	750MCM	2	5 1/8	1 1/16	1 3/4	3 3/8	1 3/4	5/8	3/8	3/16	3/16	3 3/8
JJ7AR4N	500MCM	750MCM	4	5 1/8	3	1 3/8	3 3/8	1 3/4	5/8	3/8	3/16	3/16	3 3/8
JJ8AR	750MCM	1000MCM	1	3 1/2	1 1/16	1 1/16	1 13/16	—	7/8	3/16	3/16	1/2	4 1/2
JJ8AR2N	750MCM	1000MCM	2	5 3/8	1 1/16	1 1/16	3 3/8	1 3/4	5/8	3/16	3/16	1/2	4 1/2
JJ8AR4N	750MCM	1000MCM	4	5 3/8	3	1 1/16	3 3/8	1 3/4	5/8	3/16	3/16	1/2	4 1/2

- Tabulated Dimensions are in inches and are approximate only.
- Sizes not shown available on request.
- Blank tongue available on request.
- "N" in catalog number denotes NEMA standard drilling.