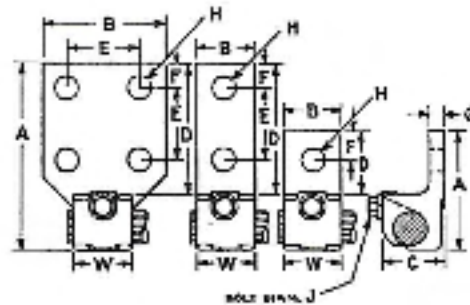
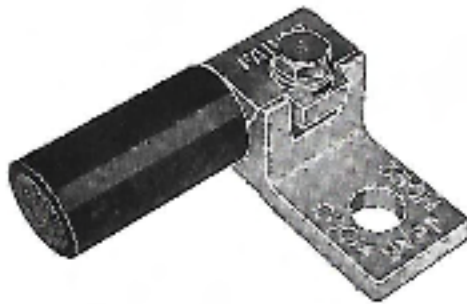


TYPE JAR

Terminal Lug – one cable 90°



Cat. No.	Cable Range		Holes in Tongue	Dimensions in inches									
	Min.	Max.		A	B	C	D	E	F	G	H	J	W
J0AR	#8 Str.	#6 Str.	1	1 1/2	1 1/4	3/8	3/8	—	3/32	3/32	3/32	1/4	1 1/16
J1AR	#6 Str.	#4 Str.	1	1 5/16	3/4	5/8	1 1/16	—	3/16	3/32	3/32	1/4	3/4
J2AR	#4 Str.	#1 Str.	1	1 3/8	5/8	1 1/16	3/16	—	3/8	3/16	3/32	3/8	2 3/32
J2AR2	#4 Str.	#1 Str.	2	2 1 3/32	5 3/32	1 1/16	1 5/8	3/4	1 3/32	3/16	3/32	3/8	2 3/32
J3AR	1/0 Str.	2/0 Str.	1	1 15/16	2 1/2	7/8	1	—	1 5/16	3/32	1 1/32	3/8	2 1/32
J3AR2	1/0 Str.	2/0 Str.	2	3 1 3/32	2 3/32	7/8	2 1/32	1	1 1/2	3/32	1 5/32	3/4	2 1/32
J4AR	2/0 Str.	4/0 Str.	1	2 1/4	1 1/16	1	1 1/16	—	3/8	1/4	3/16	3/8	1 3/16
J4AR2N	2/0 Str.	4/0 Str.	2	4 1/16	1 1/16	1	3 1/4	1 3/4	5/8	1/4	3/16	3/8	1 3/16
J5AR	4/0 Str.	350MCM	1	2 3/8	1 1/2	1 1/4	1 3/8	—	2 1/2	3/2	1 1/2	3/8	1 1 1/32
J5AR2N	4/0 Str.	350MCM	2	4 1 3/32	1 1/2	1 1/4	3 1/2	1 3/4	5/8	3/2	3/16	3/8	1 1 3/32
J5AR4N	4/0 Str.	350MCM	4	4 1 3/32	3	1 1/4	3 3/32	1 3/4	5/8	3/2	3/16	3/8	1 1 3/32
J6AR	350MCM	500MCM	1	3 1/16	1 3/16	1 1 3/32	1 3/8	—	3/4	3/16	3/16	3/8	1 3/16
J6AR2N	350MCM	500MCM	2	4 3/4	1 3/16	1 1 3/32	3 3/16	1 3/4	5/8	3/16	3/16	3/8	1 3/16
J6AR4N	350MCM	500MCM	4	4 3/4	3	1 1 3/32	3 3/16	1 3/4	5/8	3/16	3/16	3/8	1 3/16
J7AR	500MCM	750MCM	1	3 1 3/32	1 1/4	1 1 1/16	1 7/32	—	3/8	3/8	1 1/32	3/8	1 1 3/32
J7AR2N	500MCM	750MCM	2	5 1 3/32	1 1/4	1 1 1/16	3 1 3/32	1 3/4	5/8	3/8	3/16	3/8	1 1 3/32
J7AR4N	500MCM	750MCM	4	5 1 3/32	3	1 1 1/16	3 1 3/32	1 3/4	5/8	3/8	3/16	3/8	1 1 3/32
J8AR	750MCM	1000MCM	1	4 1 1/8	1 1 1/16	1 1 1/16	2 1/8	—	1	3/4	1 1/16	1/2	2 3/32
J8AR2N	750MCM	1000MCM	2	5 3/8	1 1 1/16	1 1 1/16	3 3/8	1 3/4	5/8	3/4	3/16	1/2	2 3/32
J8AR4N	750MCM	1000MCM	4	5 3/8	3	1 1 1/16	3 3/8	1 3/4	5/8	3/4	3/16	1/2	2 3/32

- Tabulated Dimensions are in inches and are approximate only.
- Sizes not shown available on request.
- Blank tongue available on request.
- "N" in catalog number denotes NEMA standard drilling.