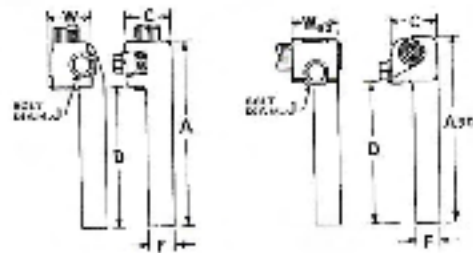


TYPE JL, JL90

Terminal Adapter – one cable



Cat. No.	Cable Range		Dimensions in Inches							
	Min.	Max.	A	A90	C	D	F	J	W	W90
J5L	4/0 Str.	350MCM	5½	—	1¼	4½	5/8	¾	1½	—
J5L90	4/0 Str.	350MCM	—	5½	1¼	4½	5/8	¾	—	1½
J6L	350MCM	500MCM	6½	—	1½	4½	¾	¾	1½	—
J6L90	350MCM	500MCM	—	6	1½	4½	¾	¾	—	1½
J7L	500MCM	750MCM	7½	—	1¾	5½	¾	¾	1¾	—
J7L90	500MCM	750MCM	—	6½	1¾	5½	¾	¾	—	1¾
J8L	750MCM	1000MCM	7¾	—	1¾	5½	1¼	½	2	—
J8L90	750MCM	1000MCM	—	7½	1¾	5½	1¼	½	—	2¾

- Tabulated Dimensions are in inches and are approximate only.
- Sizes not shown available on request.