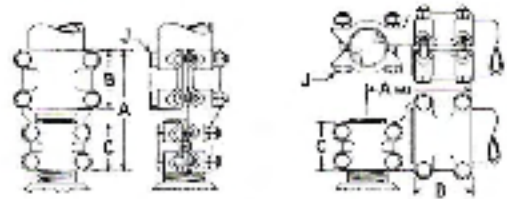


TYPE TST

Stud Connectors for tube



Catalog No.		Stud Size	I.P.S.	Dimensions in inches				
TST	TST90			A	A90	B	C	J
T2ST6	T2ST690	2-12	1	6	6 $\frac{3}{4}$	2 $\frac{1}{2}$	2 $\frac{1}{2}$	$\frac{1}{2}$
T3ST6	T3ST690	2-12	1 $\frac{1}{4}$	6 $\frac{1}{8}$	6 $\frac{3}{8}$	2 $\frac{5}{8}$	2 $\frac{1}{2}$	$\frac{1}{2}$
T4ST6	T4ST690	2-12	1 $\frac{1}{2}$	6 $\frac{1}{4}$	7	2 $\frac{3}{4}$	2 $\frac{1}{2}$	$\frac{1}{2}$
T5ST6	T5ST690	2-12	2	6 $\frac{3}{8}$	7 $\frac{1}{8}$	2 $\frac{7}{8}$	2 $\frac{1}{2}$	$\frac{1}{2}$
T6ST6	T6ST690	2-12	2 $\frac{1}{2}$	6 $\frac{1}{2}$	7 $\frac{1}{4}$	3	2 $\frac{1}{2}$	$\frac{1}{2}$
T7ST6	T7ST690	2-12	3	7	7 $\frac{7}{8}$	3 $\frac{1}{4}$	2 $\frac{1}{2}$	$\frac{5}{8}$
T3ST7	T3ST790	2 $\frac{1}{2}$ -12	1 $\frac{1}{4}$	6 $\frac{3}{8}$	7 $\frac{3}{8}$	2 $\frac{5}{8}$	2 $\frac{3}{4}$	$\frac{1}{2}$
T4ST7	T4ST790	2 $\frac{1}{2}$ -12	1 $\frac{1}{2}$	6 $\frac{1}{2}$	7 $\frac{1}{2}$	2 $\frac{3}{4}$	2 $\frac{3}{4}$	$\frac{1}{2}$
T5ST7	T5ST790	2 $\frac{1}{2}$ -12	2	6 $\frac{5}{8}$	7 $\frac{5}{8}$	2 $\frac{7}{8}$	2 $\frac{3}{4}$	$\frac{1}{2}$
T6ST7	T6ST790	2 $\frac{1}{2}$ -12	2 $\frac{1}{2}$	6 $\frac{3}{4}$	7 $\frac{7}{8}$	3	2 $\frac{3}{4}$	$\frac{1}{2}$
T7ST7	T7ST790	2 $\frac{1}{2}$ -12	3	7 $\frac{1}{4}$	8 $\frac{3}{8}$	3 $\frac{1}{4}$	3	$\frac{5}{8}$
T3ST8	T3ST890	3-12	1 $\frac{1}{4}$	6 $\frac{5}{8}$	7 $\frac{3}{8}$	2 $\frac{5}{8}$	3	$\frac{1}{2}$
T4ST8	T4ST890	3-12	1 $\frac{1}{2}$	6 $\frac{3}{4}$	8	2 $\frac{3}{4}$	3	$\frac{1}{2}$
T5ST8	T5ST890	3-12	2	6 $\frac{7}{8}$	8 $\frac{1}{8}$	2 $\frac{7}{8}$	3	$\frac{1}{2}$
T6ST8	T6ST890	3-12	2 $\frac{1}{2}$	7	8 $\frac{1}{4}$	3	3	$\frac{1}{2}$
T7ST8	T7ST890	3-12	3	7 $\frac{1}{2}$	8 $\frac{3}{8}$	3 $\frac{1}{4}$	3 $\frac{1}{4}$	$\frac{5}{8}$
T8ST8	T8ST890	3-12	3 $\frac{1}{2}$	7 $\frac{3}{4}$	9 $\frac{1}{8}$	3 $\frac{1}{2}$	3 $\frac{1}{4}$	$\frac{5}{8}$
T9ST8	T9ST890	3-12	4	8 $\frac{1}{4}$	9 $\frac{3}{8}$	3 $\frac{3}{4}$	3 $\frac{1}{4}$	$\frac{5}{8}$

- Sizes not shown available on request.
- Smooth bore available on request.
- Tabulated dimensions are in inches and are approximate only.