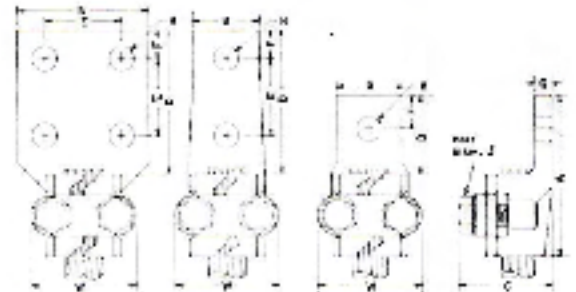


TYPE XPA

Terminal Lug – one cable straight



Patented

Cat. No.	Cable Range		Holes in Tongue	Dimensions in inches									
	Min.	Max.		A	B	C	D	E	F	G	H	J	W
XP11A	6	1/0	1	3 1/4	1 1/2	1 1/4	1 3/4	—	3/4	1/4	5/16	3/8	2
XP11A2N	6	1/0	2	4 3/4	1 1/2	1 1/4	3 1/4	1 3/4	5/8	1/4	5/16	3/8	2
XP11A4N	6	1/0	4	4 3/4	3	1 1/4	3 1/4	1 3/4	5/8	1/4	5/16	3/8	2
XP12A	6	1/0	1	3 5/8	1 1/2	1 1/4	1 3/4	—	3/4	1/4	5/16	1/2	2 1/4
XP12A2N	6	1/0	2	4 5/8	1 1/2	1 1/4	3 1/4	1 3/4	5/8	1/4	5/16	1/2	2 1/4
XP12A4N	6	1/0	4	4 5/8	3	1 1/4	3 1/4	1 3/4	5/8	1/4	5/16	1/2	2 1/4
XP13A	1/0	250M	1	3 5/8	1 1/2	1 3/8	1 3/4	—	3/4	3/8	5/16	3/8	2
XP13A2N	1/0	250M	2	4 1/8	1 1/2	1 3/8	3 1/4	1 3/4	5/8	3/8	5/16	3/8	2
XP13A4N	1/0	250M	4	4 1/8	3	1 3/8	3 1/4	1 3/4	5/8	3/8	5/16	3/8	2
XP14A	1/0	250M	1	3 5/8	1 1/2	1 3/8	1 3/4	—	3/4	3/8	5/16	1/2	2 1/4
XP14A2N	1/0	250M	2	5 1/8	1 1/2	1 3/8	3 1/4	1 3/4	5/8	3/8	5/16	1/2	2 1/4
XP14A4N	1/0	250M	4	5 1/8	3	1 3/8	3 1/4	1 3/4	5/8	3/8	5/16	1/2	2 1/4
XP15A	4/0	500M	1	3 5/8	1 1/2	1 3/4	1 3/4	—	3/4	3/8	5/16	1/2	2 1/4
XP15A2N	4/0	500M	2	5 1/8	1 1/2	1 3/4	3 1/4	1 3/4	5/8	3/8	5/16	1/2	2 1/4
XP15A4N	4/0	500M	4	5 1/8	3	1 3/4	3 1/4	1 3/4	5/8	3/8	5/16	1/2	2 1/4
XP16A	500M	1000M	1	3 3/4	1 1/2	2 3/8	1 3/4	—	3/4	3/8	5/16	1/2	2 1/2
XP16A2N	500M	1000M	2	5 1/4	1 1/2	2 3/8	3 1/4	1 3/4	5/8	3/8	5/16	1/2	2 1/2
XP16A4N	500M	1000M	4	5 1/4	3	2 3/8	3 1/4	1 3/4	5/8	3/8	5/16	1/2	2 1/2

- Tabulated Dimensions are in inches and are approximate only.
- Sizes not shown available on request.
- Blank tongue available on request.
- "N" in catalog number denotes NEMA standard drilling.