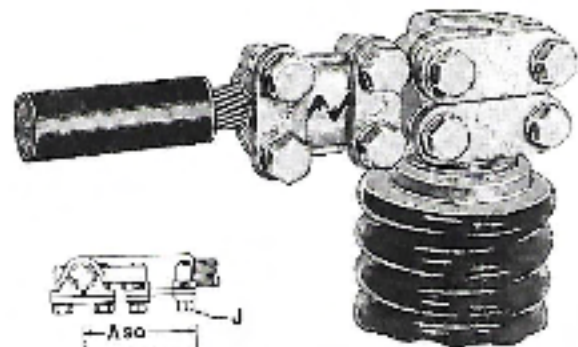
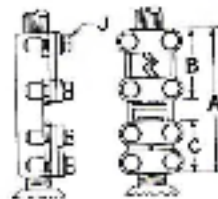


TYPE PSP

Stud Connectors for cable/tube



Patented

Catalog No.		Stud Size	Cable Range		Dimensions in Inches				
PSP	PSP90		Min.	Max.	A	A90	B	C	J
P2SP0	P2SP090	1/2-13	#4 Str.	2/0 Str.	5 1/8	4 3/16	2 3/16	2	1/2
P4SP0	P4SP090	1/2-13	2/0 Str.	350MCM	5 1/2	4 3/16	2 13/16	2	1/2
P2SP1	P2SP190	3/4-16	#4 Str.	2/0 Str.	5 1/8	4 3/16	2 3/16	2	1/2
P4SP1	P4SP190	3/4-16	2/0 Str.	350MCM	5 1/2	4 3/16	2 13/16	2	1/2
P5SP1	P5SP190	3/4-16	350MCM	600MCM	5 1/2	4 3/16	2 13/16	2	1/2
P6SP1	P6SP190	3/4-16	600MCM	1000MCM	5 11/16	4 3/4	3	2	1/2
P2SP2	P2SP290	1-14	#4 Str.	2/0 Str.	5 3/8	4 1/4	2 3/8	2 3/16	1/2
P4SP2	P4SP290	1-14	2/0 Str.	350MCM	5 3/8	4 5/8	2 13/16	2 3/16	1/2
P5SP2	P5SP290	1-14	350MCM	600MCM	5 3/8	4 5/8	2 13/16	2 3/16	1/2
P6SP2	P6SP290	1-14	600MCM	1000MCM	6	4 13/16	3	2 3/8	1/2
P7SP2	P7SP290	1-14	1000MCM	1500MCM	6 3/8	5	3 3/16	2 3/16	1/2
P2SP3	P2SP390	1 1/8-12	#4 Str.	2/0 Str.	5 3/8	4 1/4	2 3/16	2 3/16	1/2
P4SP3	P4SP390	1 1/8-12	2/0 Str.	350MCM	5 3/8	4 3/8	2 13/16	2 3/16	1/2
P5SP3	P5SP390	1 1/8-12	350MCM	600MCM	5 3/8	4 5/8	2 13/16	2 3/16	1/2
P6SP3	P6SP390	1 1/8-12	600MCM	1000MCM	6	4 13/16	3	2 3/16	1/2
P7SP3	P7SP390	1 1/8-12	1000MCM	1500MCM	6 3/8	5	3 3/16	2 3/16	1/2
P2SP4	P2SP490	1 1/4-12	#4 Str.	2/0 Str.	5 1/2	4 3/16	2 3/16	2 3/8	1/2
P4SP4	P4SP490	1 1/4-12	2/0 Str.	350MCM	6	4 13/16	2 3/16	2 3/8	1/2
P5SP4	P5SP490	1 1/4-12	350MCM	600MCM	6	4 13/16	2 13/16	2 3/8	1/2
P6SP4	P6SP490	1 1/4-12	600MCM	1000MCM	6 3/8	5	3	2 3/8	1/2
P7SP4	P7SP490	1 1/4-12	1000MCM	1500MCM	6 3/8	5 3/16	3 3/16	2 3/8	1/2
P2SP5	P2SP590	1 1/2-12	#4 Str.	2/0 Str.	5 1/2	4 7/16	2 3/16	2 3/8	1/2
P4SP5	P4SP590	1 1/2-12	2/0 Str.	350MCM	6	4 13/16	2 13/16	2 3/8	1/2
P5SP5	P5SP590	1 1/2-12	350MCM	600MCM	6	4 13/16	2 13/16	2 3/8	1/2
P6SP5	P6SP590	1 1/2-12	600MCM	1000MCM	6 3/8	5	3	2 3/8	1/2
P7SP5	P7SP590	1 1/2-12	1000MCM	1500MCM	6 3/8	5 3/16	3 3/16	2 3/8	1/2
P8SP5	P8SP590	1 1/2-12	1500MCM	2000MCM	6 3/8	5 3/8	3 3/8	2 3/8	1/2

- Sizes not shown available on request.
- Smooth bore available on request.
- Tabulated Dimensions are in inches and are approximate only.