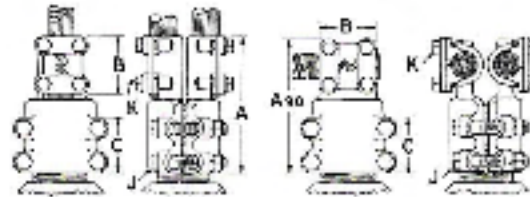


TYPE 2PST

Stud Connectors for 2 cables/tube



2PST

2PST90

Patented

| Catalog No. | | Stud Size | Cable Range | | Dimensions in Inches | | | | | |
|-------------|-----------|-----------|-------------|----------|----------------------|-----|----|----|---|---|
| 2PST | 2PST90 | | Min. | Max. | A | A90 | B | C | J | K |
| 2P2ST5 | 2P2ST590 | 1½-12 | #4 Str. | 2/0 Str. | 5¼ | 5⅝ | 2¼ | 2½ | ½ | ½ |
| 2P4ST5 | 2P4ST590 | 1½-12 | 2/0 Str. | 350MCM | 6¼ | 5⅝ | 2¼ | 2½ | ½ | ½ |
| 2P5ST5 | 2P5ST590 | 1½-12 | 350MCM | 600MCM | 6⅞ | 5⅞ | 2¼ | 2½ | ½ | ½ |
| 2P6ST5 | 2P6ST590 | 1½-12 | 600MCM | 1000MCM | 6¼ | 5⅞ | 3 | 2½ | ½ | ½ |
| 2P7ST5 | 2P7ST590 | 1½-12 | 1000MCM | 1500MCM | 6¼ | 6¼ | 3⅝ | 2½ | ½ | ½ |
| 2P8ST5 | 2P8ST590 | 1½-12 | 1500MCM | 2000MCM | 6⅝ | 6⅝ | 3⅝ | 2½ | ½ | ½ |
| 2P2ST6 | 2P2ST690 | 2-12 | #4 Str. | 2/0 Str. | 5¼ | 5⅝ | 2¼ | 2½ | ½ | ½ |
| 2P4ST6 | 2P4ST690 | 2-12 | 2/0 Str. | 350MCM | 6¼ | 5⅝ | 2¼ | 2½ | ½ | ½ |
| 2P5ST6 | 2P5ST690 | 2-12 | 350MCM | 600MCM | 6⅞ | 5⅞ | 2¼ | 2½ | ½ | ½ |
| 2P6ST6 | 2P6ST690 | 2-12 | 600MCM | 1000MCM | 6¼ | 5⅞ | 3 | 2½ | ½ | ½ |
| 2P7ST6 | 2P7ST690 | 2-12 | 1000MCM | 1500MCM | 6¼ | 6¼ | 3⅝ | 2½ | ½ | ½ |
| 2P8ST6 | 2P8ST690 | 2-12 | 1500MCM | 2000MCM | 6⅝ | 6⅝ | 3⅝ | 2½ | ½ | ½ |
| 2P2ST7 | 2P2ST790 | 2½-12 | #4 Str. | 2/0 Str. | 5¼ | 5⅝ | 2¼ | 2¾ | ½ | ½ |
| 2P4ST7 | 2P4ST790 | 2½-12 | 2/0 Str. | 350MCM | 6¼ | 5⅝ | 2¼ | 2¾ | ½ | ½ |
| 2P5ST7 | 2P5ST790 | 2½-12 | 350MCM | 600MCM | 6⅞ | 5⅞ | 2¼ | 2¾ | ½ | ½ |
| 2P6ST7 | 2P6ST790 | 2½-12 | 600MCM | 1000MCM | 6½ | 6¼ | 3 | 2¾ | ½ | ½ |
| 2P7ST7 | 2P7ST790 | 2½-12 | 1000MCM | 1500MCM | 6⅞ | 6¼ | 3⅝ | 2¾ | ½ | ½ |
| 2P8ST7 | 2P8ST790 | 2½-12 | 1500MCM | 2000MCM | 6⅝ | 6¼ | 3⅝ | 2¾ | ½ | ½ |
| 2P2ST8 | 2P2ST890 | 3-12 | #4 Str. | 2/0 Str. | 6¼ | 6⅞ | 2¼ | 3 | ½ | ½ |
| 2P4ST8 | 2P4ST890 | 3-12 | 2/0 Str. | 350MCM | 6¼ | 6⅞ | 2¼ | 3 | ½ | ½ |
| 2P5ST8 | 2P5ST890 | 3-12 | 350MCM | 600MCM | 6¼ | 6⅞ | 2¼ | 3 | ½ | ½ |
| 2P6ST8 | 2P6ST890 | 3-12 | 600MCM | 1000MCM | 7 | 6¼ | 3 | 3¼ | ⅝ | ½ |
| 2P7ST8 | 2P7ST890 | 3-12 | 1000MCM | 1500MCM | 7¼ | 6¼ | 3⅝ | 3¼ | ⅝ | ½ |
| 2P8ST8 | 2P8ST890 | 3-12 | 1500MCM | 2000MCM | 7⅝ | 7¼ | 3⅝ | 3¼ | ⅝ | ½ |
| 2P2ST9 | 2P2ST990 | 3½-12 | #4 Str. | 2/0 Str. | 6¼ | 6⅞ | 2¼ | 3 | ½ | ½ |
| 2P4ST9 | 2P4ST990 | 3½-12 | 2/0 Str. | 350MCM | 6¼ | 6⅞ | 2¼ | 3 | ½ | ½ |
| 2P5ST9 | 2P5ST990 | 3½-12 | 350MCM | 600MCM | 6¼ | 6⅞ | 2¼ | 3 | ½ | ½ |
| 2P6ST9 | 2P6ST990 | 3½-12 | 600MCM | 1000MCM | 7 | 6¼ | 3 | 3¼ | ⅝ | ½ |
| 2P7ST9 | 2P7ST990 | 3½-12 | 1000MCM | 1500MCM | 7¼ | 6¼ | 3⅝ | 3¼ | ⅝ | ½ |
| 2P8ST9 | 2P8ST990 | 3½-12 | 1500MCM | 2000MCM | 7⅝ | 7¼ | 3⅝ | 3¼ | ⅝ | ½ |
| 2P2ST10 | 2P2ST1090 | 4-12 | #4 Str. | 2/0 Str. | 6¼ | 6⅞ | 2¼ | 3 | ½ | ½ |
| 2P4ST10 | 2P4ST1090 | 4-12 | 2/0 Str. | 350MCM | 6¼ | 6⅞ | 2¼ | 3 | ½ | ½ |
| 2P5ST10 | 2P5ST1090 | 4-12 | 350MCM | 600MCM | 6¼ | 6⅞ | 2¼ | 3 | ½ | ½ |
| 2P6ST10 | 2P6ST1090 | 4-12 | 600MCM | 1000MCM | 7 | 6¼ | 3 | 3¼ | ⅝ | ½ |
| 2P7ST10 | 2P7ST1090 | 4-12 | 1000MCM | 1500MCM | 7¼ | 6¼ | 3⅝ | 3¼ | ⅝ | ½ |
| 2P8ST10 | 2P8ST1090 | 4-12 | 1500MCM | 2000MCM | 7⅝ | 7¼ | 3⅝ | 3¼ | ⅝ | ½ |

- Sizes not shown available on request.
- Smooth bore available on request.