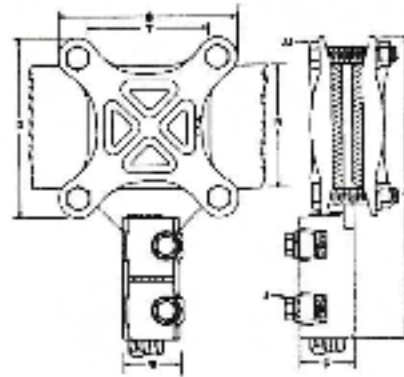
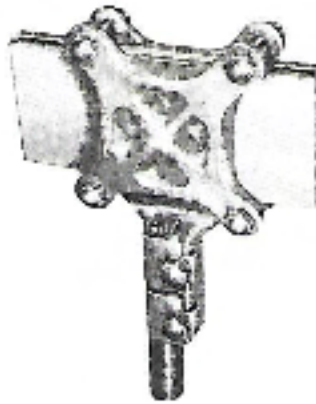


TYPE HJJ

Bar Tap



Cat. No.	Width of Bus Bars		Cable Range		Dimensions in Inches						
	R	T	Min.	Max.	A	B	C	D	J	JJ	W
HJJ433	3	3	2/0 Str.	4/0 Str.	6 $\frac{1}{8}$	4 $\frac{3}{8}$	1	4 $\frac{3}{8}$	$\frac{3}{8}$	$\frac{3}{8}$	1 $\frac{1}{8}$
HJJ444	4	4	2/0 Str.	4/0 Str.	7 $\frac{1}{8}$	5 $\frac{3}{8}$	1	5 $\frac{3}{8}$	$\frac{5}{8}$	$\frac{1}{2}$	1 $\frac{1}{8}$
HJJ533	3	3	4/0 Str.	350MCM	7 $\frac{1}{8}$	4 $\frac{3}{8}$	1 $\frac{1}{4}$	4 $\frac{3}{8}$	$\frac{5}{8}$	$\frac{3}{8}$	1 $\frac{1}{4}$
HJJ544	4	4	4/0 Str.	350MCM	8 $\frac{1}{8}$	5 $\frac{3}{8}$	1 $\frac{1}{4}$	5 $\frac{3}{8}$	$\frac{3}{8}$	$\frac{1}{2}$	1 $\frac{1}{4}$
HJJ633	3	3	350MCM	500MCM	7 $\frac{3}{8}$	4 $\frac{3}{8}$	1 $\frac{1}{8}$	4 $\frac{3}{8}$	$\frac{3}{8}$	$\frac{3}{8}$	1 $\frac{1}{8}$
HJJ644	4	4	350MCM	500MCM	8 $\frac{3}{8}$	5 $\frac{3}{8}$	1 $\frac{1}{8}$	5 $\frac{3}{8}$	$\frac{3}{8}$	$\frac{1}{2}$	1 $\frac{1}{8}$
HJJ733	3	3	500MCM	750MCM	8 $\frac{1}{8}$	4 $\frac{3}{8}$	1 $\frac{3}{4}$	4 $\frac{3}{8}$	$\frac{3}{8}$	$\frac{3}{8}$	1 $\frac{1}{8}$
HJJ744	4	4	500MCM	750MCM	9 $\frac{1}{8}$	5 $\frac{3}{8}$	1 $\frac{3}{4}$	5 $\frac{3}{8}$	$\frac{3}{8}$	$\frac{1}{2}$	1 $\frac{1}{8}$
HJJ833	3	3	750MCM	1000MCM	8 $\frac{1}{8}$	4 $\frac{3}{8}$	1 $\frac{1}{8}$	4 $\frac{3}{8}$	$\frac{1}{2}$	$\frac{3}{8}$	1 $\frac{1}{8}$
HJJ844	4	4	750MCM	1000MCM	9 $\frac{1}{8}$	5 $\frac{3}{8}$	1 $\frac{1}{8}$	5 $\frac{3}{8}$	$\frac{1}{2}$	$\frac{1}{2}$	1 $\frac{1}{8}$

- Standard tongue $\frac{1}{4}$ " thick.
- Standard spacing between clamps is $\frac{3}{4}$ " specify if greater spacing is required.
- Use back to back for multiple cable taps.