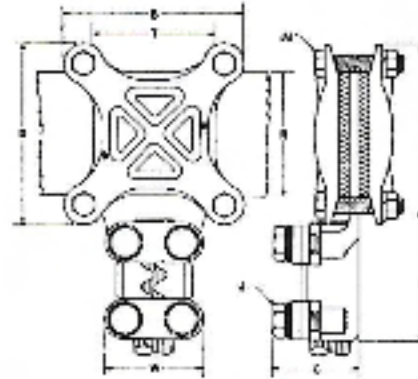


TYPE HP

Bar Tap



Cat. No.	Width of Bus Bars		Cable Range		I. P. S.	Dimensions in Inches						
	R	T	Min.	Max.		A	B	C	D	J	JJ	W
HP433	3	3	2/0 Str.	350MCM	3/8	7 ³ / ₁₆	4 ³ / ₁₆	1 ³ / ₄	4 ³ / ₁₆	1/2	3/8	2 ³ / ₁₆
HP444	4	4	2/0 Str.	350MCM	3/8	8 ³ / ₁₆	5 ³ / ₁₆	1 ³ / ₄	5 ³ / ₁₆	1/2	1/2	2 ³ / ₁₆
HP533	3	3	350MCM	600MCM	1/2	7 ³ / ₁₆	4 ³ / ₁₆	1 ¹⁵ / ₁₆	4 ³ / ₁₆	1/2	3/8	2 ³ / ₁₆
HP544	4	4	350MCM	600MCM	1/2	8 ³ / ₁₆	5 ³ / ₁₆	1 ¹⁵ / ₁₆	5 ³ / ₁₆	1/2	1/2	2 ³ / ₁₆
HP633	3	3	600MCM	1000MCM	3/4	7 ³ / ₁₆	4 ³ / ₁₆	2 ⁵ / ₁₆	4 ³ / ₁₆	1/2	3/8	2 ³ / ₁₆
HP644	4	4	600MCM	1000MCM	3/4	8 ³ / ₁₆	5 ³ / ₁₆	2 ⁵ / ₁₆	5 ³ / ₁₆	1/2	1/2	2 ³ / ₁₆
HP733	3	3	1000MCM	1500MCM	1	7 ³ / ₁₆	4 ³ / ₁₆	2 ⁷ / ₁₆	4 ³ / ₁₆	1/2	3/8	2 ¹³ / ₁₆
HP744	4	4	1000MCM	1500MCM	1	8 ¹³ / ₁₆	5 ³ / ₁₆	2 ⁷ / ₁₆	5 ³ / ₁₆	1/2	1/2	2 ¹³ / ₁₆
HP833	3	3	1500MCM	2000MCM	1 ¹ / ₄	7 ³ / ₄	4 ³ / ₁₆	3	4 ³ / ₁₆	1/2	3/8	3 ¹ / ₁₆
HP844	4	4	1500MCM	2000MCM	1 ¹ / ₄	9	5 ³ / ₁₆	3	5 ³ / ₁₆	1/2	1/2	3 ¹ / ₁₆

- Tongue thickness is 1/8" up to and including 1000MCM, tongues are thicker on larger sizes and require mounting on outside of bus bars.
- Standard spacing between clamps is 3/8" specify if greater spacing is required.
- Use back to back for multiple cable taps.